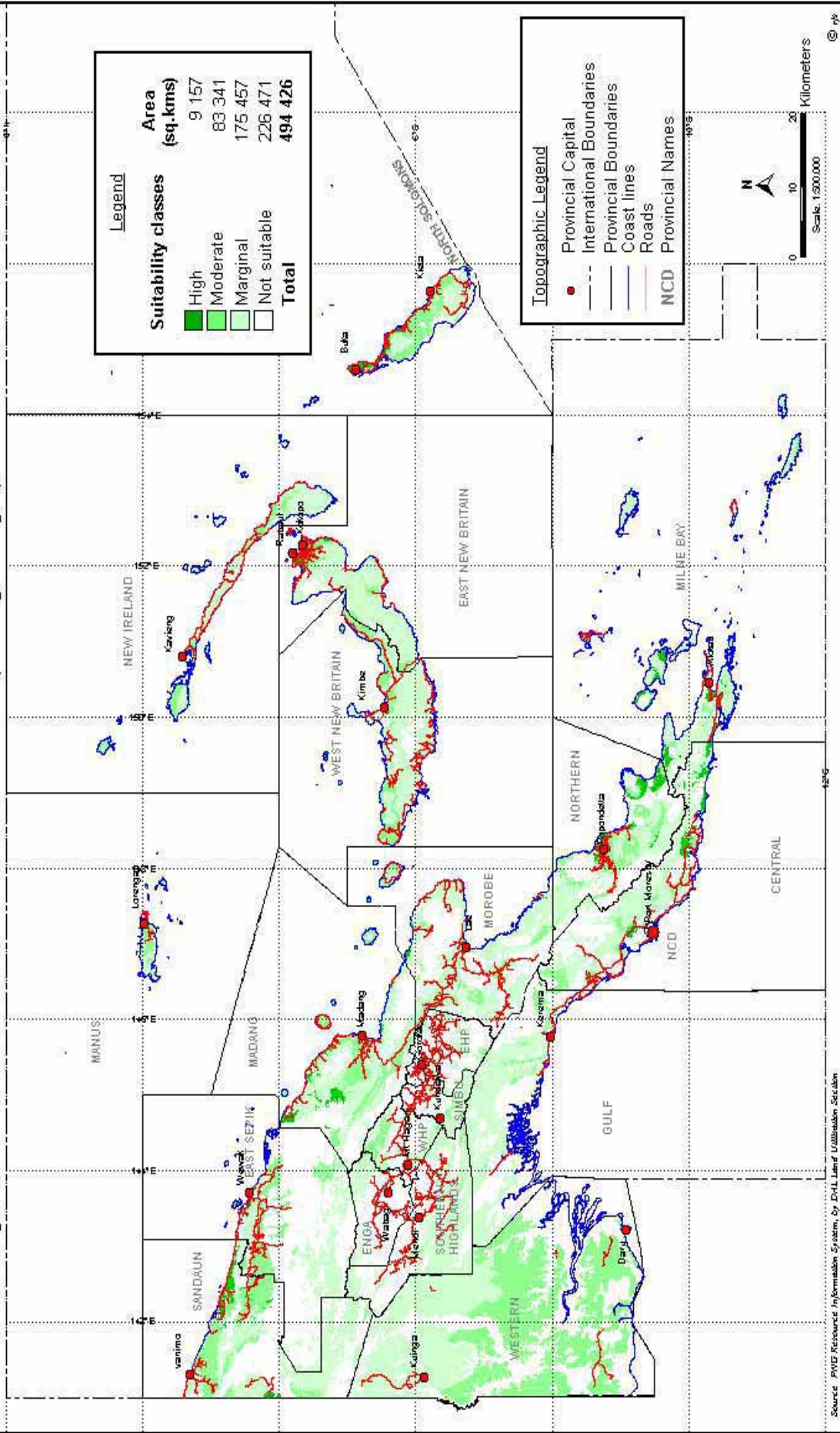
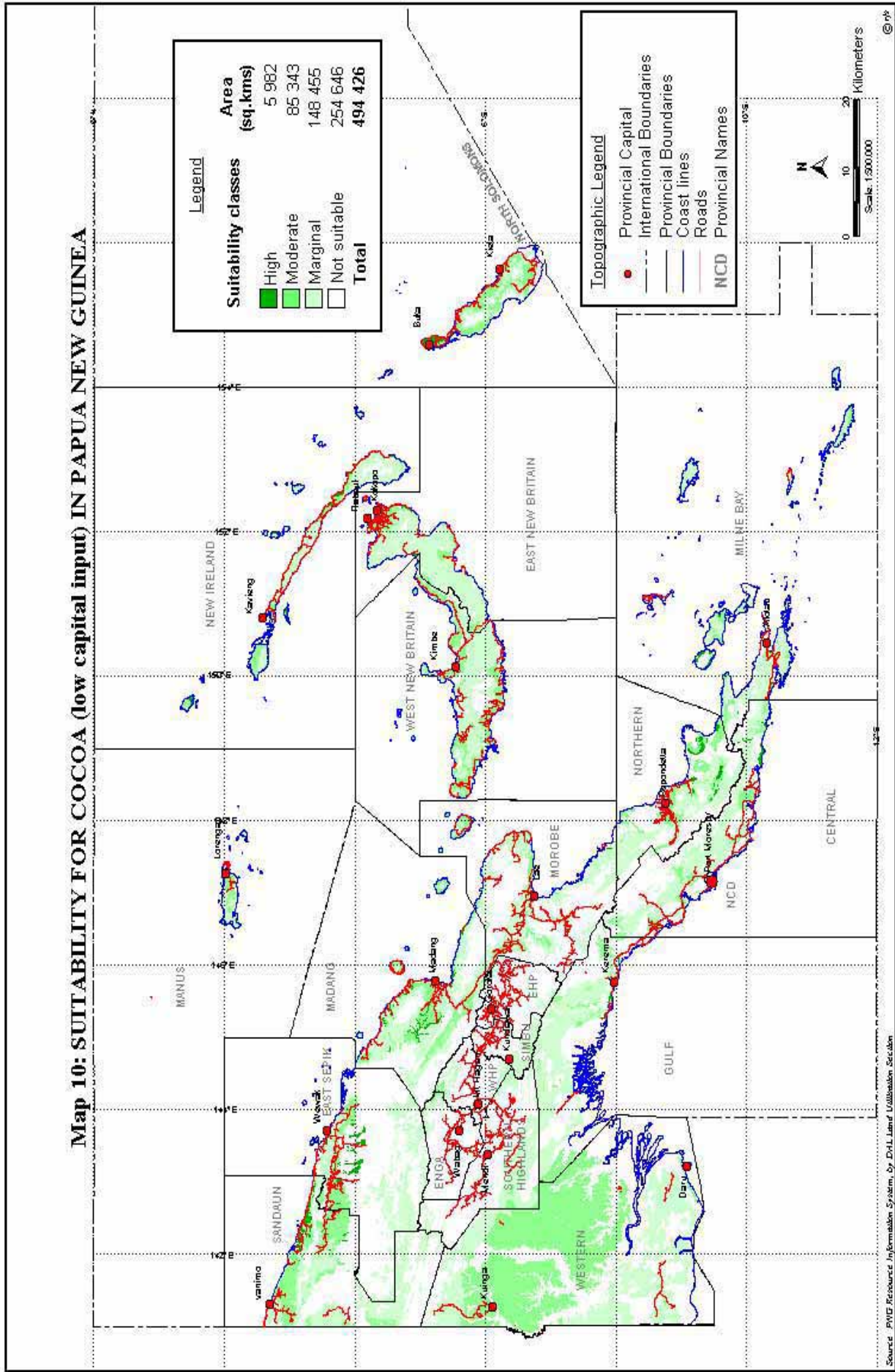


Map 9b: SUITABILITY FOR ROBUSTA COFFEE (low capital input) IN PAPUA NEW GUINEA



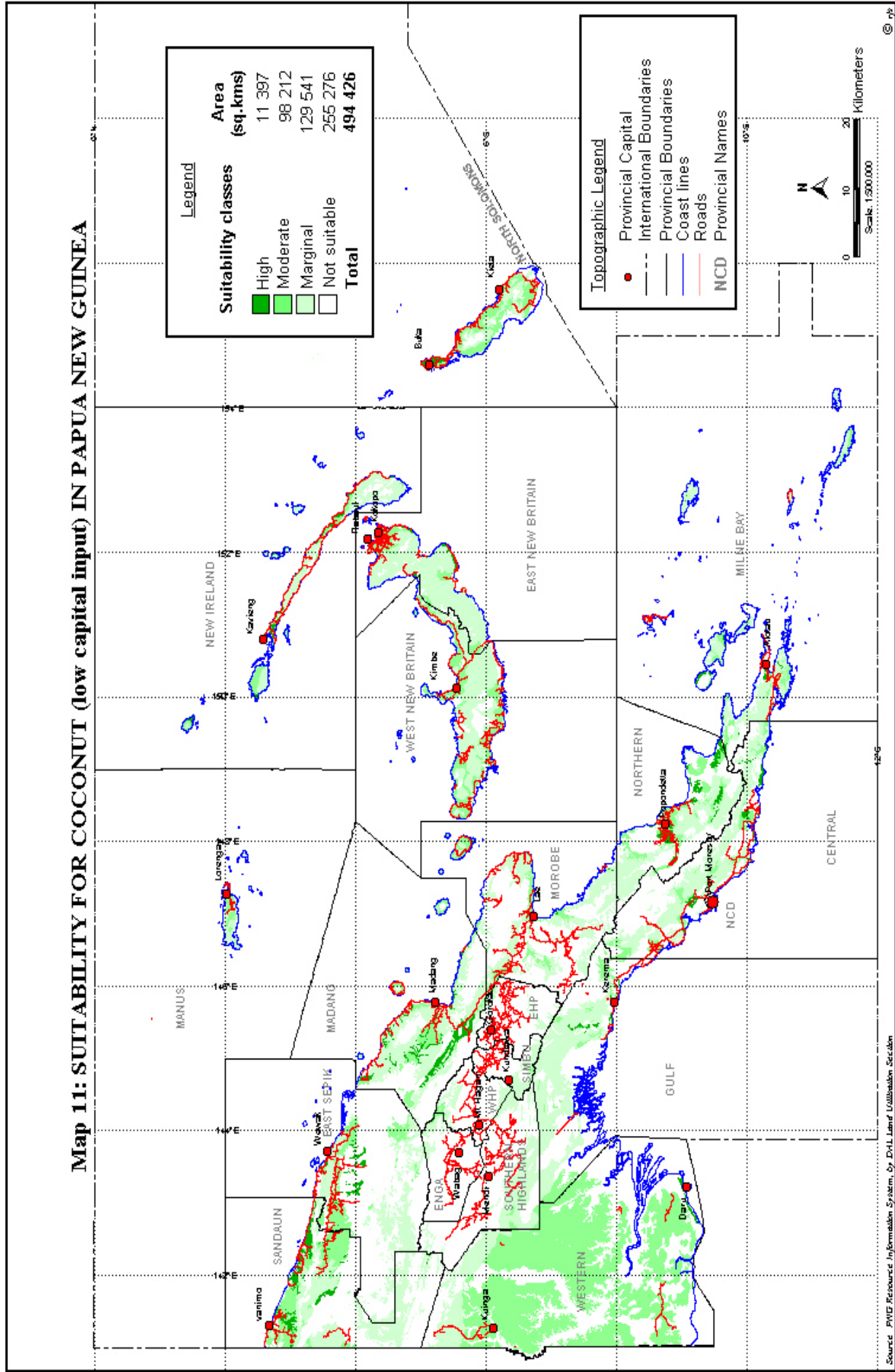
Source: PWD Resource Information System, by DNL Land Utilisation Section

Map 10: SUITABILITY FOR COCOA (low capital input) IN PAPUA NEW GUINEA

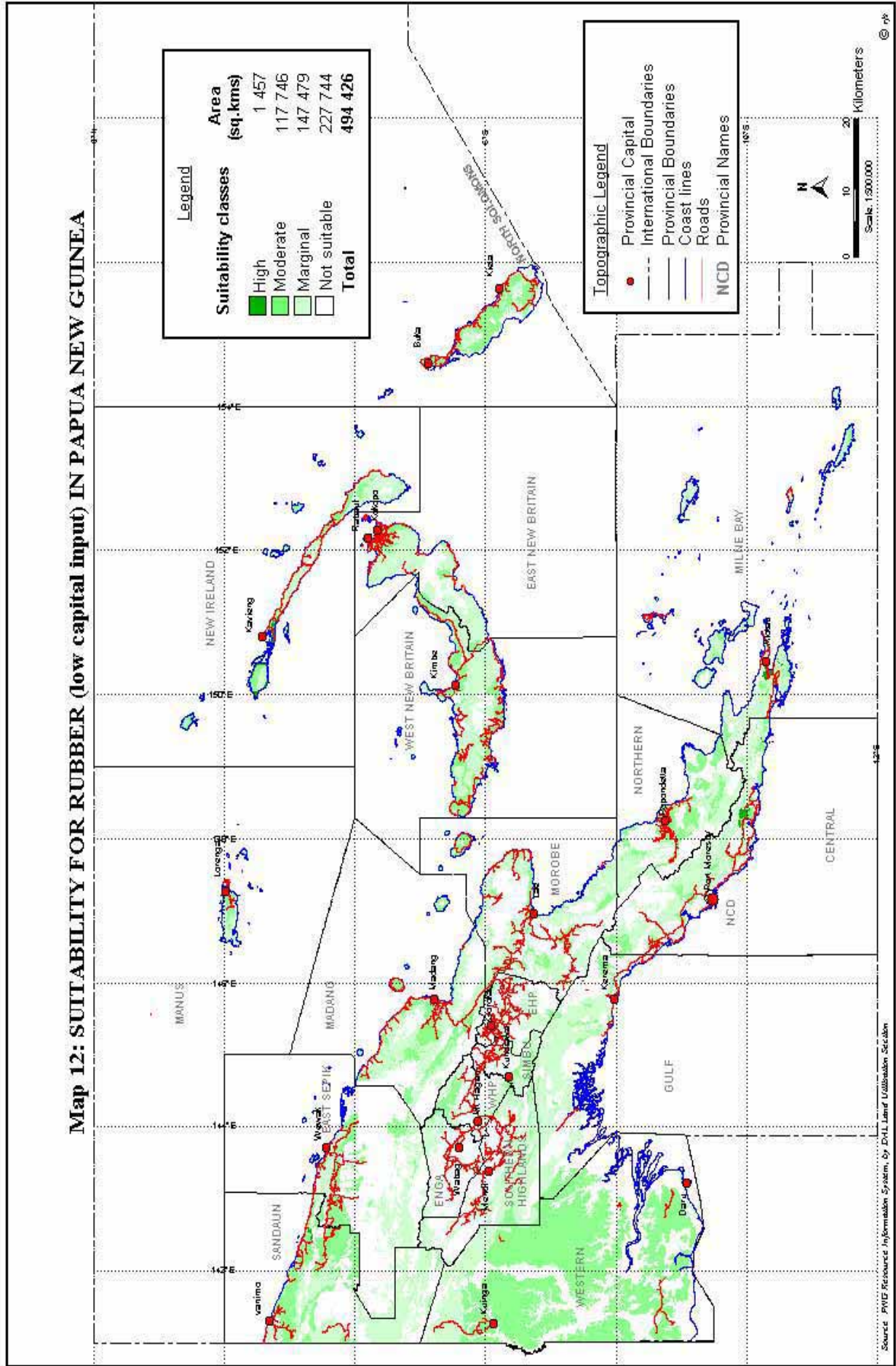


Source: PNG Resource Information System, by DLI Land Utilization Section

Map 11: SUITABILITY FOR COCONUT (low capital input) IN PAPUA NEW GUINEA

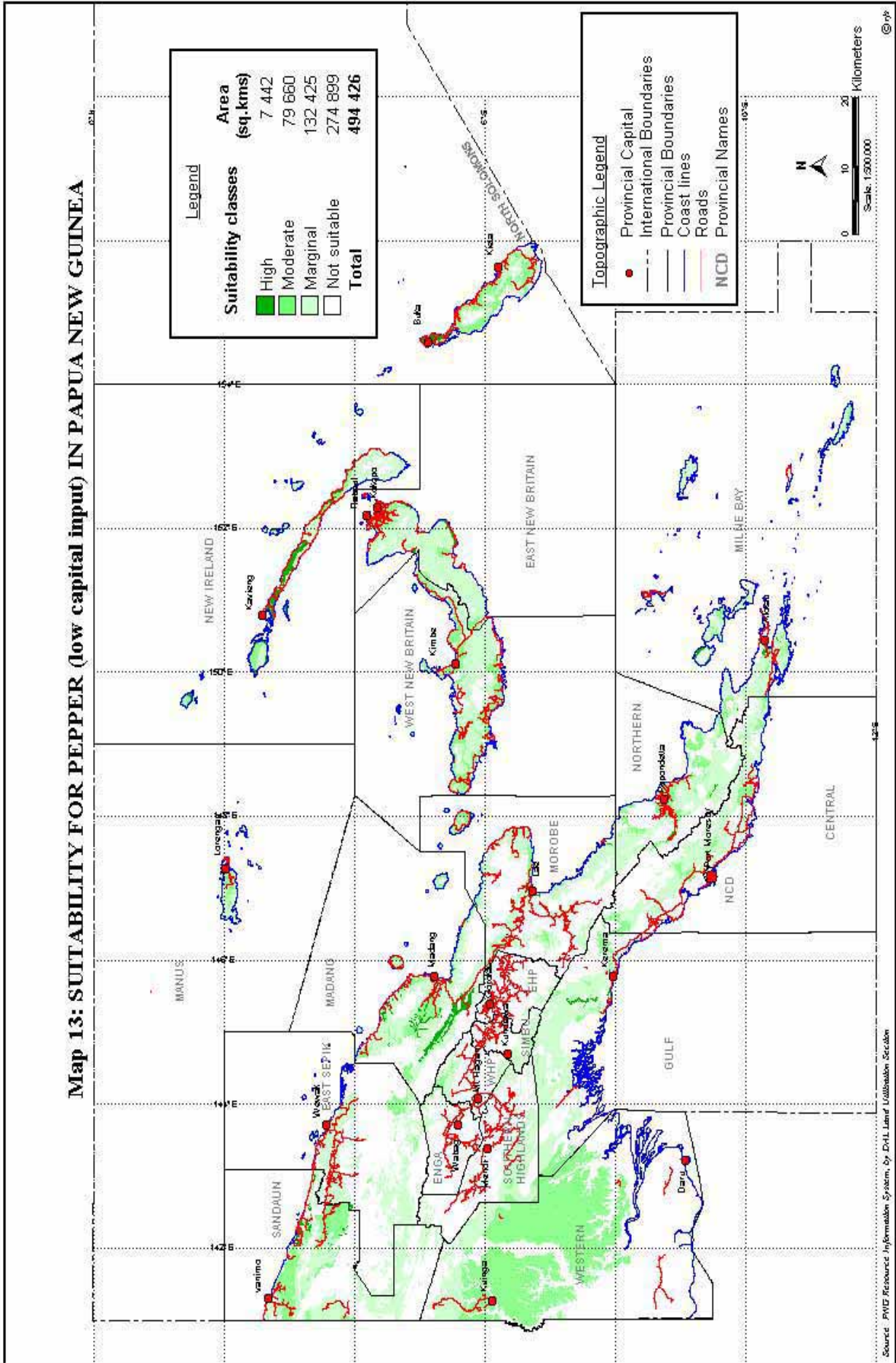


Map 12: SUITABILITY FOR RUBBER (low capital input) IN PAPUA NEW GUINEA

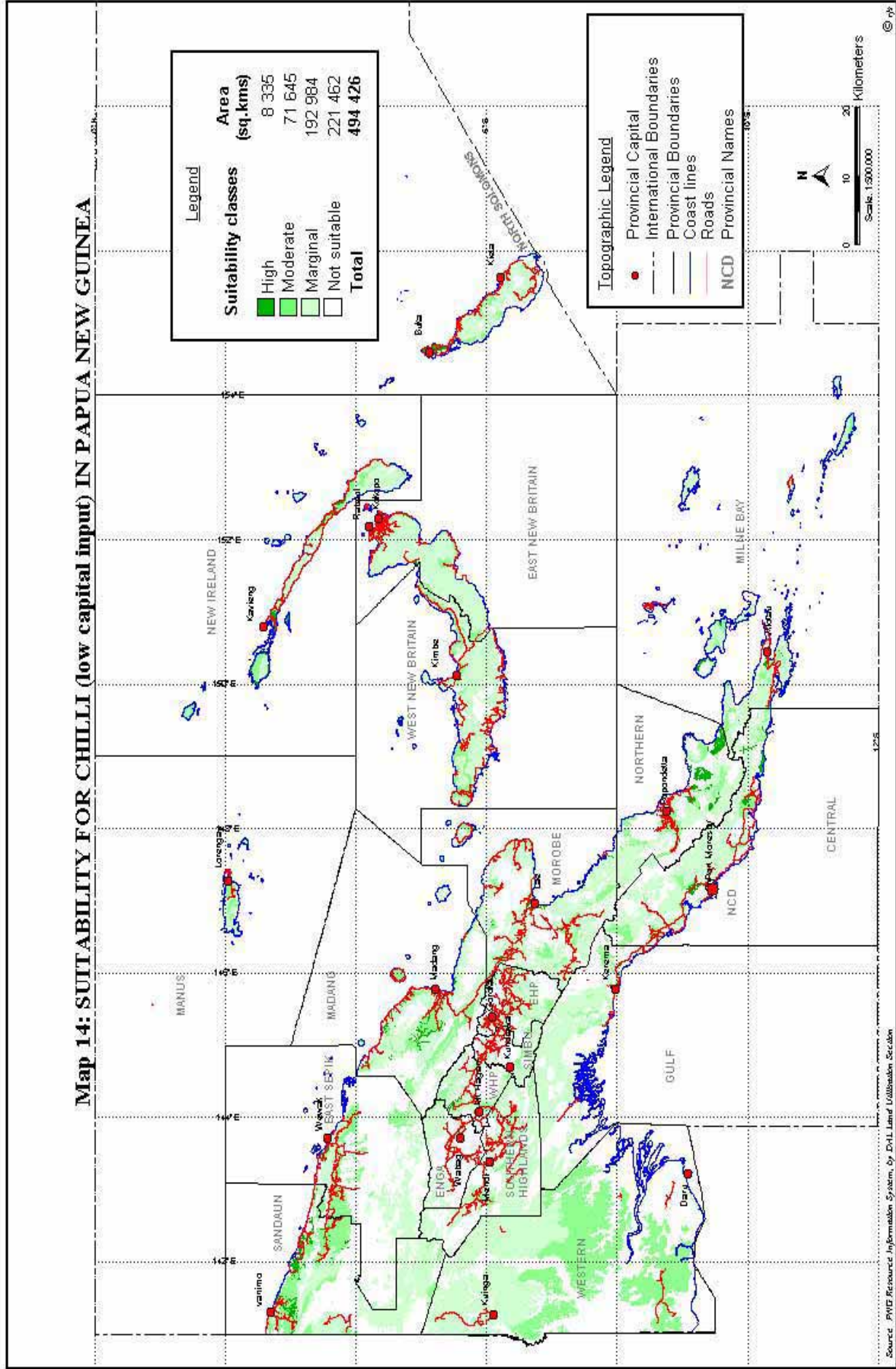


Source: PNG Resource Information System, by Dr. Liand Ullibek, 2004

Map 13: SUITABILITY FOR PEPPER (low capital input) IN PAPUA NEW GUINEA

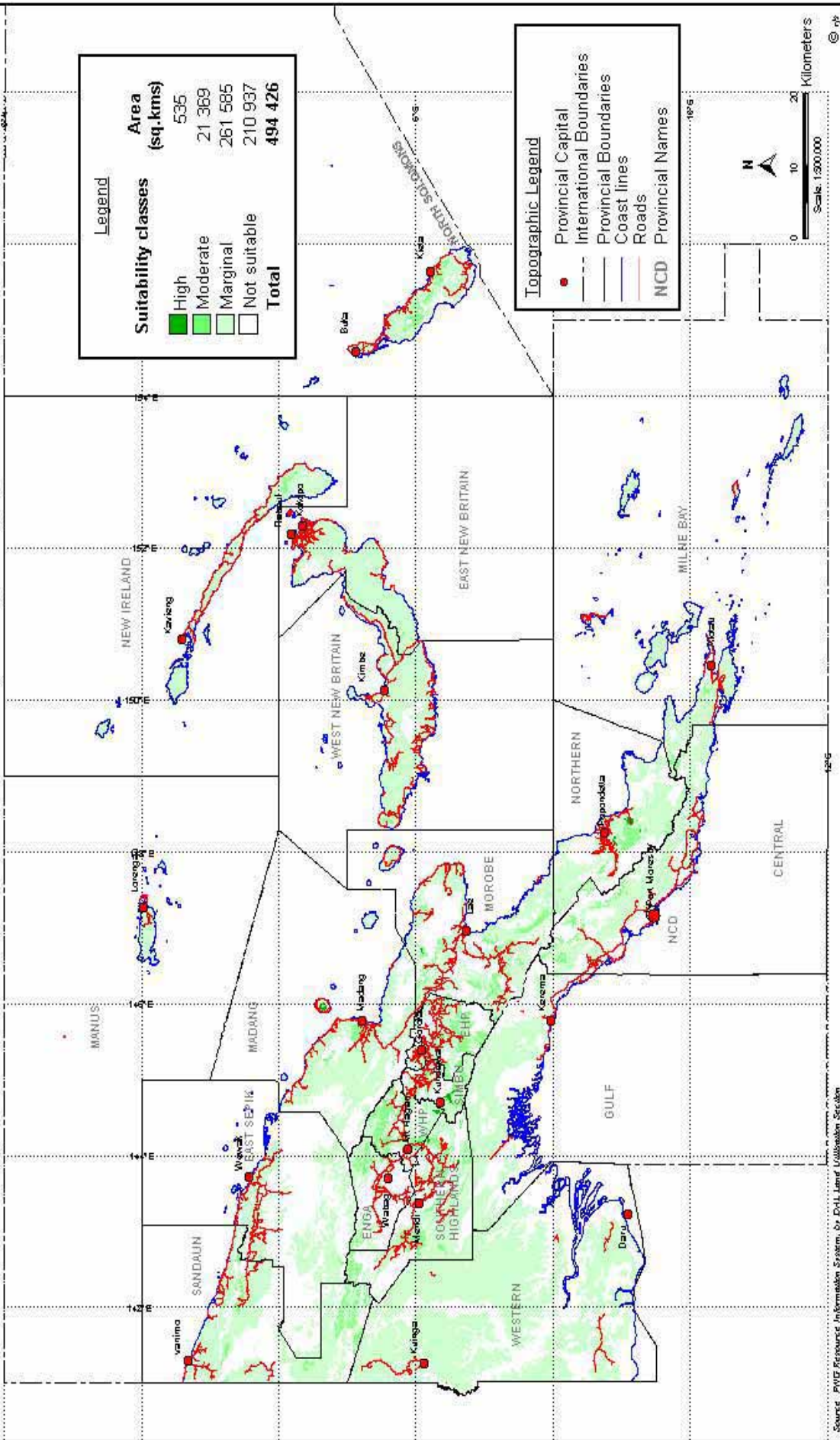


Map 14: SUITABILITY FOR CHILLI (low capital input) IN PAPUA NEW GUINEA



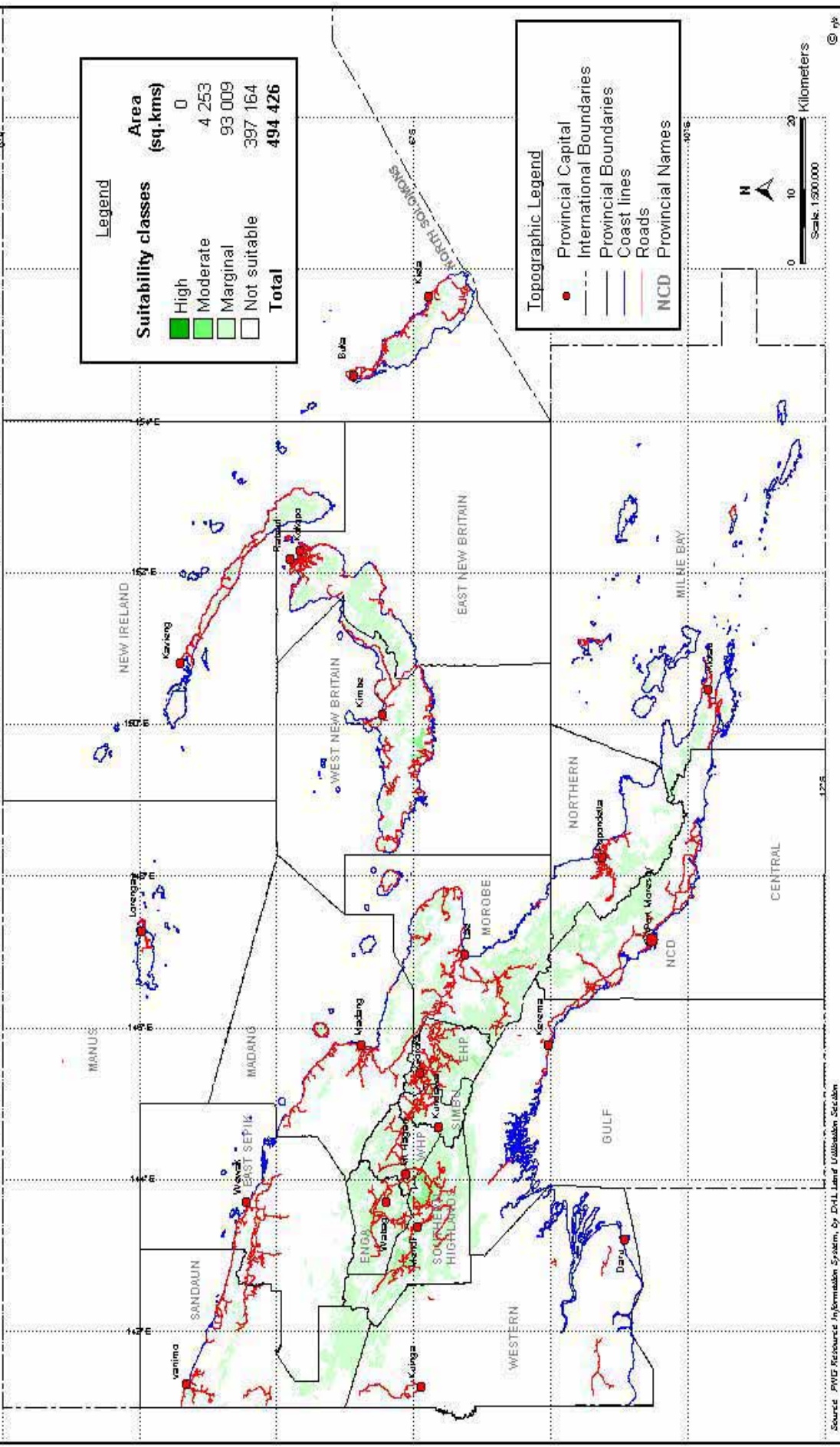
Source: PWD Resource Information System, by DoL Land Utilization Section

Map 15: SUITABILITY FOR CARDAMON (low capital input) IN PAPUA NEW GUINEA



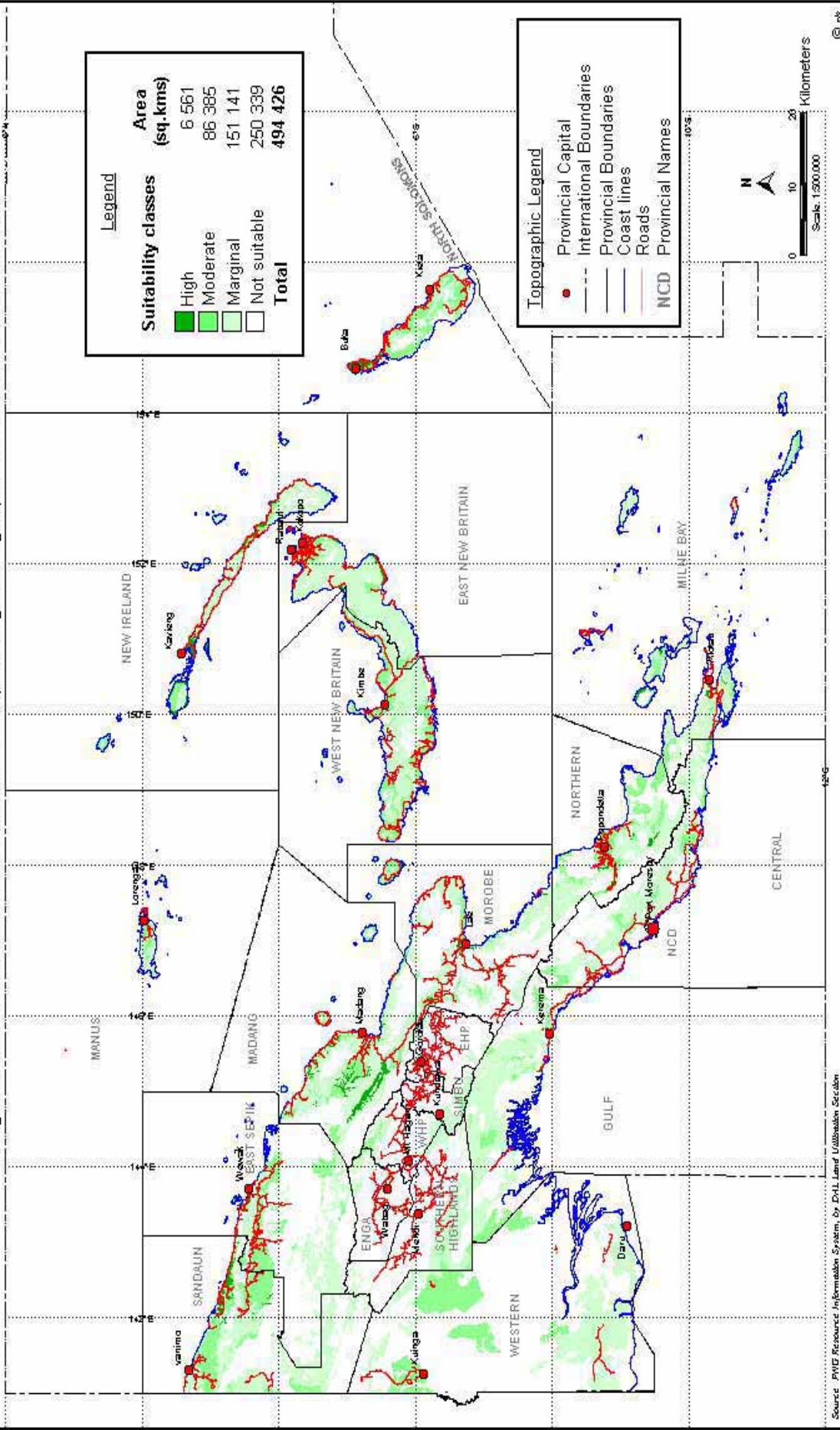
Source: PWD Resource Information System, by DVL Land Utilisation Section

Map 16: SUITABILITY FOR PYRETHRUM (low capital input) IN PAPUA NEW GUINEA



Source: PWD Resource Information System, by DHL Land Utilisation Section

Map 17: SUITABILITY FOR VANILLA (low capital input) IN PAPUA NEW GUINEA



Map 18: SUITABILITY FOR PASTURE (low capital input) IN PAPUA NEW GUINEA

